

Do you want him/her to~?







A: Do you want her to call you back?

B: Yes, please. / (No, thank you.)



Role Play!

Write your answer. Then, do the role play.

1.  him ()	2.  her ()	3.  Taro ()
4.  Rina ()	5.  Ken ()	6.  Kate ()

clean this room | paint a picture | read this book | take a memo | speak English | sing a song

Write your partner's answer.

1.	2.	3.	4.	5.	6.

Could you tell him/her to~?

A: Could you tell her to call me back?

B: Ok. I'll tell her. / (No. I won't tell her.)



Role Play!

Write your answer. Then, do the role play.

1.  him ()	2.  Yuki ()	3.  Mr. Williams ()
---------------------------------------------------------------------------------------------------	----------------------------------------------------------------------------------------------------	--------------------------------------------------------------------------------------------------------------

Write your partner's answer.

1.	2.	3.

come to school
be quiet
be on time

Do you want him/her to ~?

Practice Speaking!

Write your answer. Then, do the role play.

A. Hello!

B. Hello. This is _____.
(name)

May I speak to _____, please.
(classmate's name)

A. I'm sorry, _____ is out. he | she | him | her

Do you want _____ to _____?

- LINE you
- send you an e-mail
- call you back



A. Sure.

B. No, it's OK.

But, can I leave a message?

- Aeon's
- Jusco's
- Saty's

B. Could you tell _____ to come to _____ at _____?
(place) (time)

him | her

AEON JUSCO SATY

A. Ok. _____ at _____.
(place) (time)

B. _____.
(For example: Yes. Thank you, Mr/Ms. ~)

A. _____.
(For example: You're welcome.)

Cultural Learning!

Turn Back Time: The High Street

Listen and write.

New Words

modern

shopkeepers

forward

century

carpenter

grocer

trading

fresh

ingredients

poisonous

refrigerator

packaged

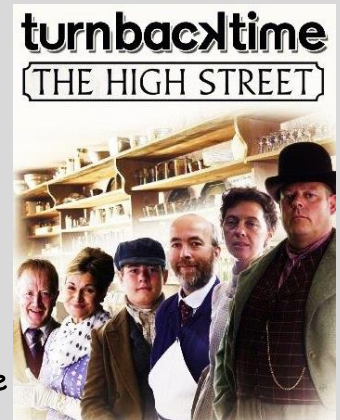
rations

muttons

self-service



The High Street was once a lively town. It had many shops. But, what if you can turn back time? A British TV program has done that. A group of (1) shopkeepers and their families were sent back to 1870's. Through their experiences, they saw a (2) of change when they were move (3) in time to the 1970's.



Victorian Era

In this time, there's the butcher, the baker, the (4), and the (5). The shopkeepers had to learn the basics of Victorian (6). The bakers had a hard time with baking and worked from morning to the night. White bread was the most popular. But, because (7) flour was difficult to get, (8) (9) were used! The butcher had to sell every part of a big pig. There was no (10).

Edwardian Era

This was the golden age of shopping. Many shops started to sell (11) goods. There's the dressmaker at this time. Children were still working in shops. The baker shop became a tea shop. The customers were given the best service. But, the Edwardian high street was a difficult place for women and children.

It's the 1930

Life in this time was easier. The (12) could work less hours. Sugar was easy to get. There were lots of sweets and cakes! The Edwardian bazaar became a toy shop.

World War two

WWII made life difficult. Many of the goods were left almost empty in shops. The shops had to follow the wartime rules. Customers must decide to stay with (13) or buy goods from the black market. Because there weren't much beef, the butcher had to sell (14).

It's the 1960's

Big changes came to the high street. Because meat, bread, and clothing were easy to get in the 1960's, the shops changed. The baker shop became a burger restaurant, the butcher sold hardware, and the dressmaker became a hair salon. The grocer became today's (15) supermarket.

It's the 1970's

This was a time of the convenient shop vs. the supermarket. When the supermarket was closed in the evening, the convenient shop was opened.

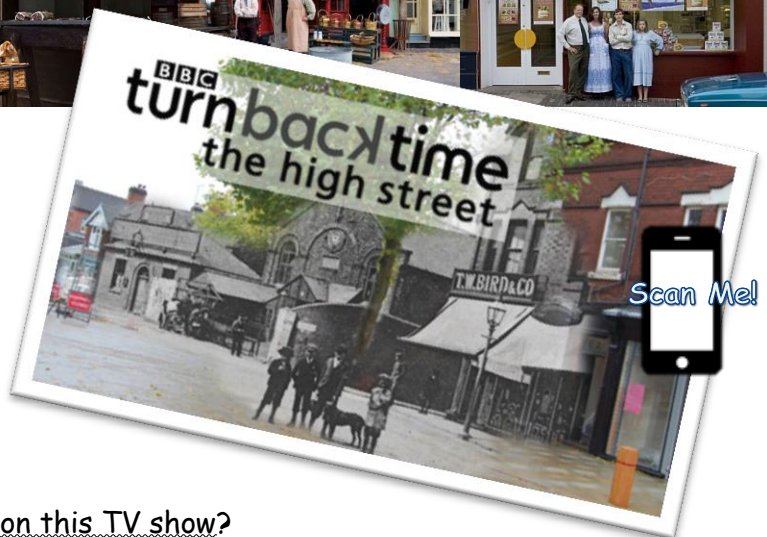


Follow Eigo Ganbare on Aurasma!

Q & A:

1. Do you want your family to be on this TV show?
(For example: ~, I ~)

2. Why? If yes, could you tell them to go back in time?
(For example: Because ~.)



For Teachers:

Turn Back Time: The High Street

The High Street was once a lively town. It had many shops. But, what if you can turn back time? A British TV program has done that. A group of modern shopkeepers and their families were sent back to 1870's. Through their experiences, they saw a century of change when they were move forward in time to the 1970's.

Victorian Era

In this time, there's the butcher, the baker, the carpenter, and the grocer. The shopkeepers had to learn the basics of Victorian trading. The bakers had a hard time with baking and worked from morning to night. White bread was the most popular. But, because fresh flour was difficult to get, poisonous ingredients were used! The butcher had to sell every part of a big pig. There was no refrigerator.

Edwardian Era

This was the golden age of shopping. Many shops started to sell packaged goods. There's the dressmaker at this time. Children were still working in shops. The baker shop became a tea shop. The customers were given the best service. But, the Edwardian high street was a difficult place for women and children.

It's the 1930

Life in this time was easier. The shopkeepers could work less hours. Sugar was easy to get. There were lots of sweets and cakes! The Edwardian bazaar became a toy shop.

World War two

WWII made life difficult. Many of the goods were left almost empty in shops. The shops had to follow the wartime rules. Customers must decide to stay with rations or buy goods from the black market. Because there weren't much beef, the butcher had to sell muttons.

It's the 1960's

Big changes came to the high street. Because meat, bread, and clothing were easy to get in the 1960's, the shops changed. The baker shop became a burger restaurant, the butcher sold hardware, and the dressmaker became a hair salon. The grocer became today's self-service supermarket.

It's the 1970's

This was a time of the convenient shop vs. the supermarket. When the supermarket was closed in the evening, the convenient shop was opened.